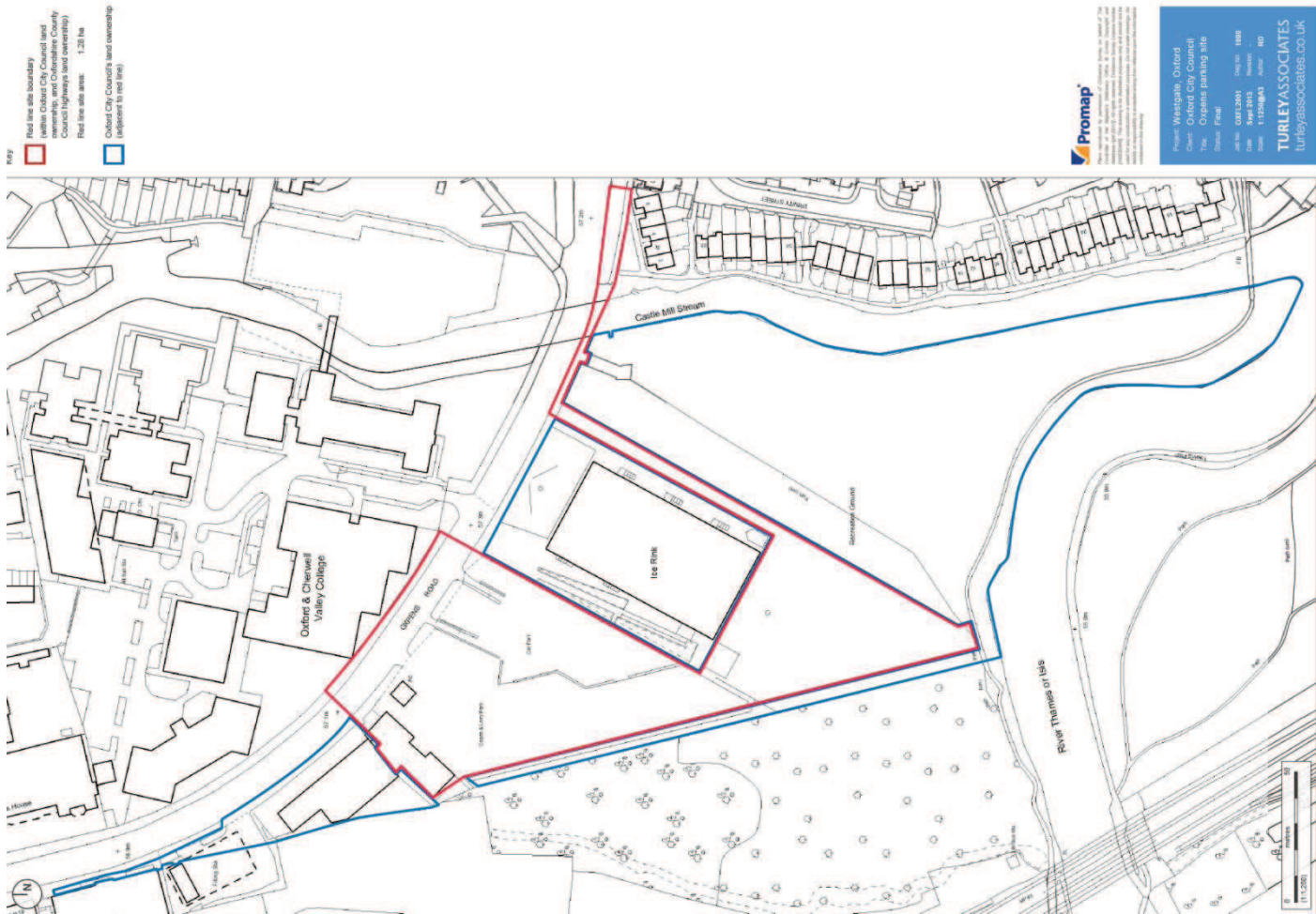




## **Welcome to the West Area Planning Committee**

- **This planning committee meeting is held in public, but it is not a public meeting.**
- **There will be opportunity for the public to address the committee on each application.**
- **If you wish to speak for or against a planning application, you will need to have either requested it in advance, or fill out and hand in one of the available speaker forms.**
- **Information on meeting protocol and conduct at committee is set out in the Code of Practice.**
- **You can find a copy of the Code of Practice in the committee agenda, just before the first planning application report.**

# Site Plan



View from North East



Entrance to Ice Rink from North



Entrance to Car Park from North East



Toilet Block from North



Night Club Viewed from North West



Approach from West along Oxpens Road





Coach Park Viewed from South



Coach Park Viewed from West



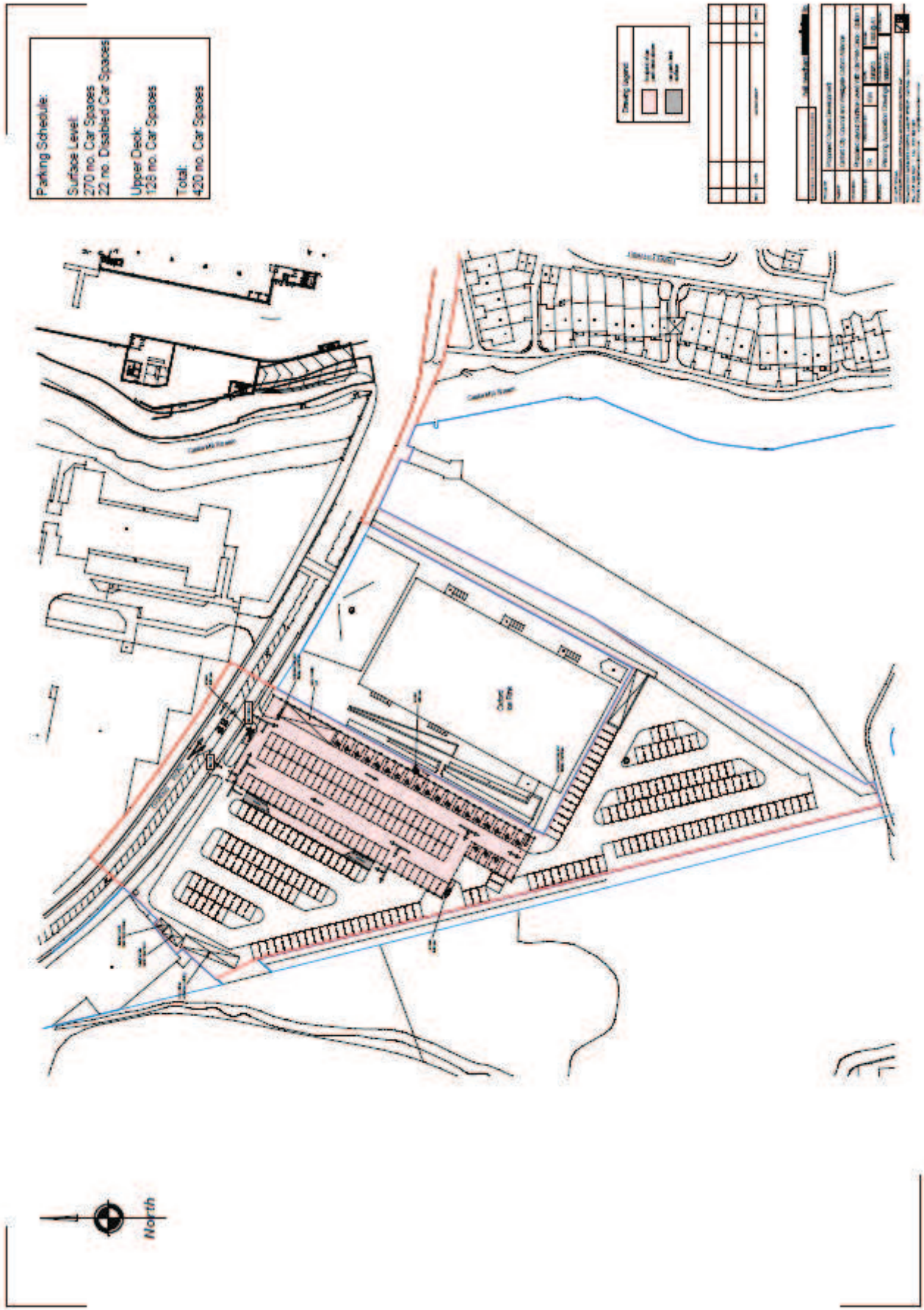
To Rear of Ice Rink



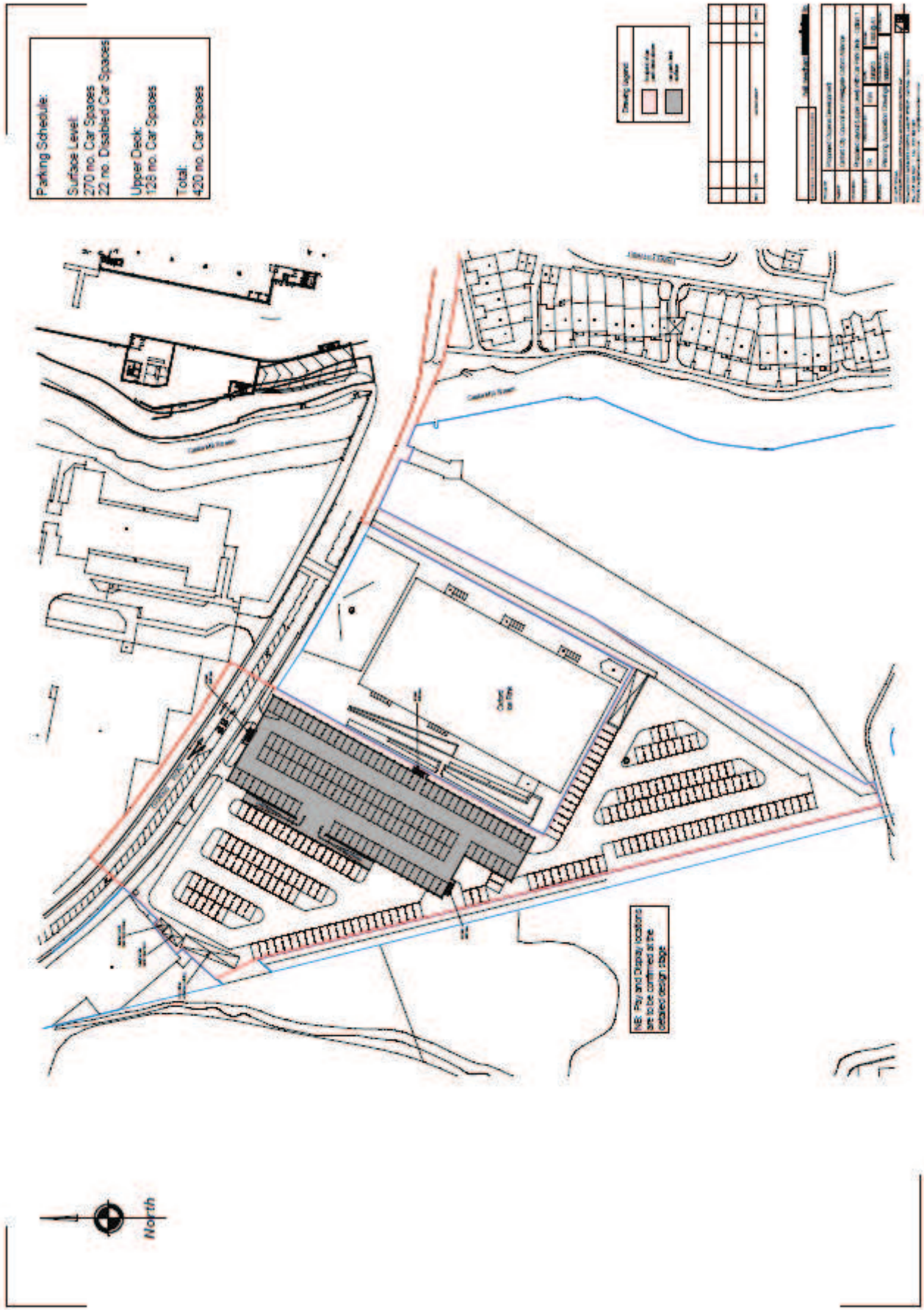
Rear of Ice Rink from Oxpens Recreation Ground



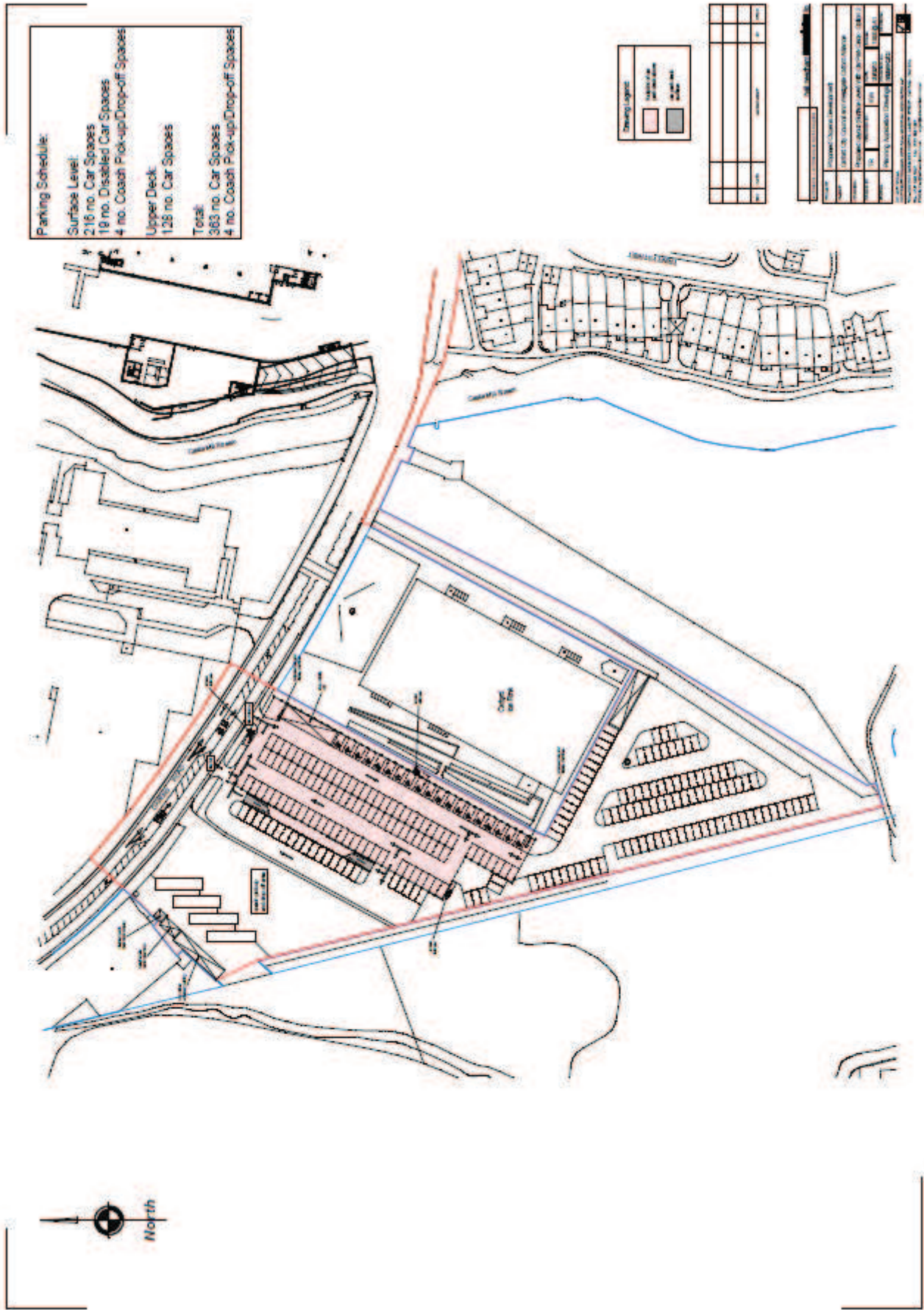
# Site Layout Option 1: Ground



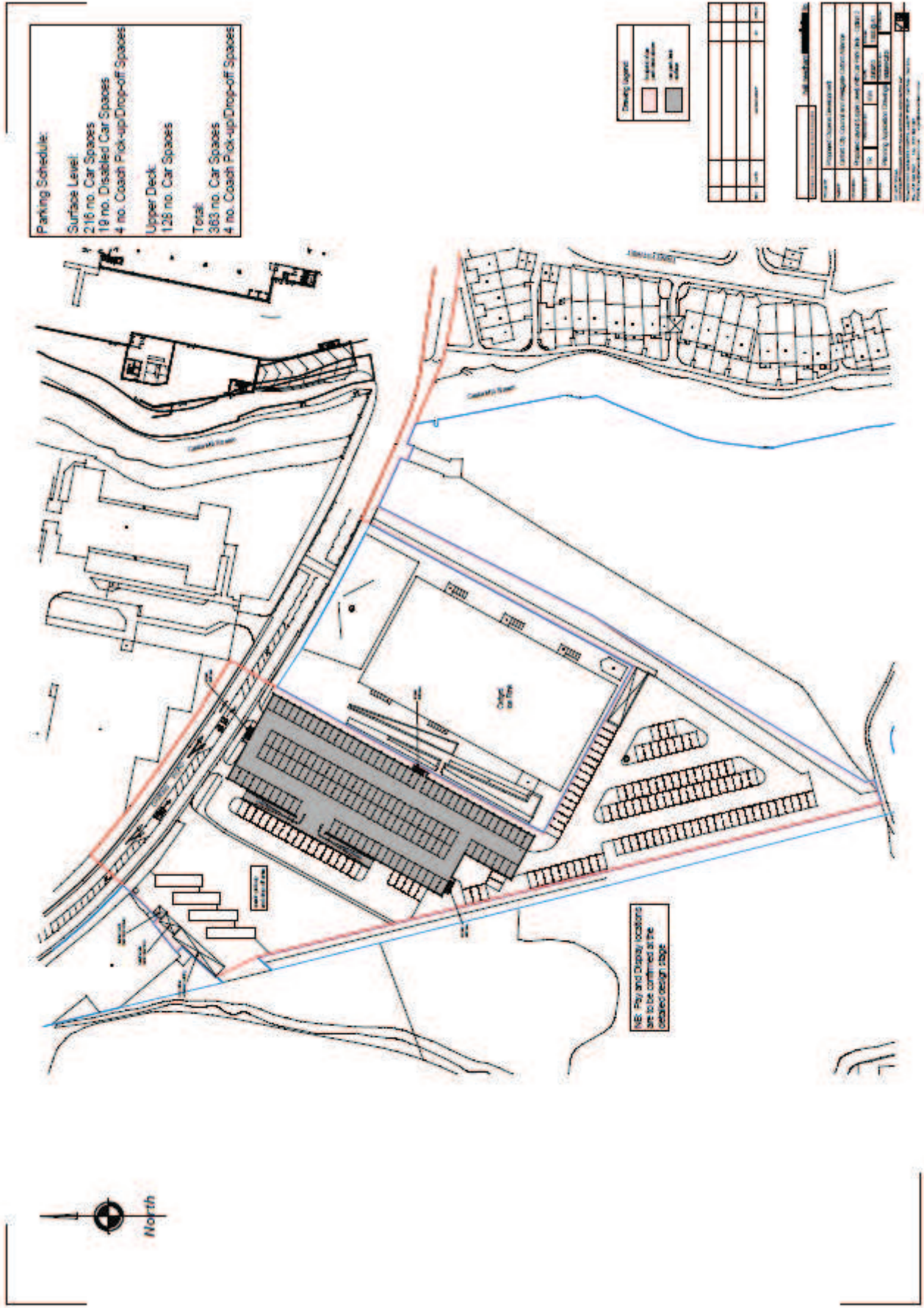
# Site Layout Option 2: First Floor



# Site Layout Option 2: Ground

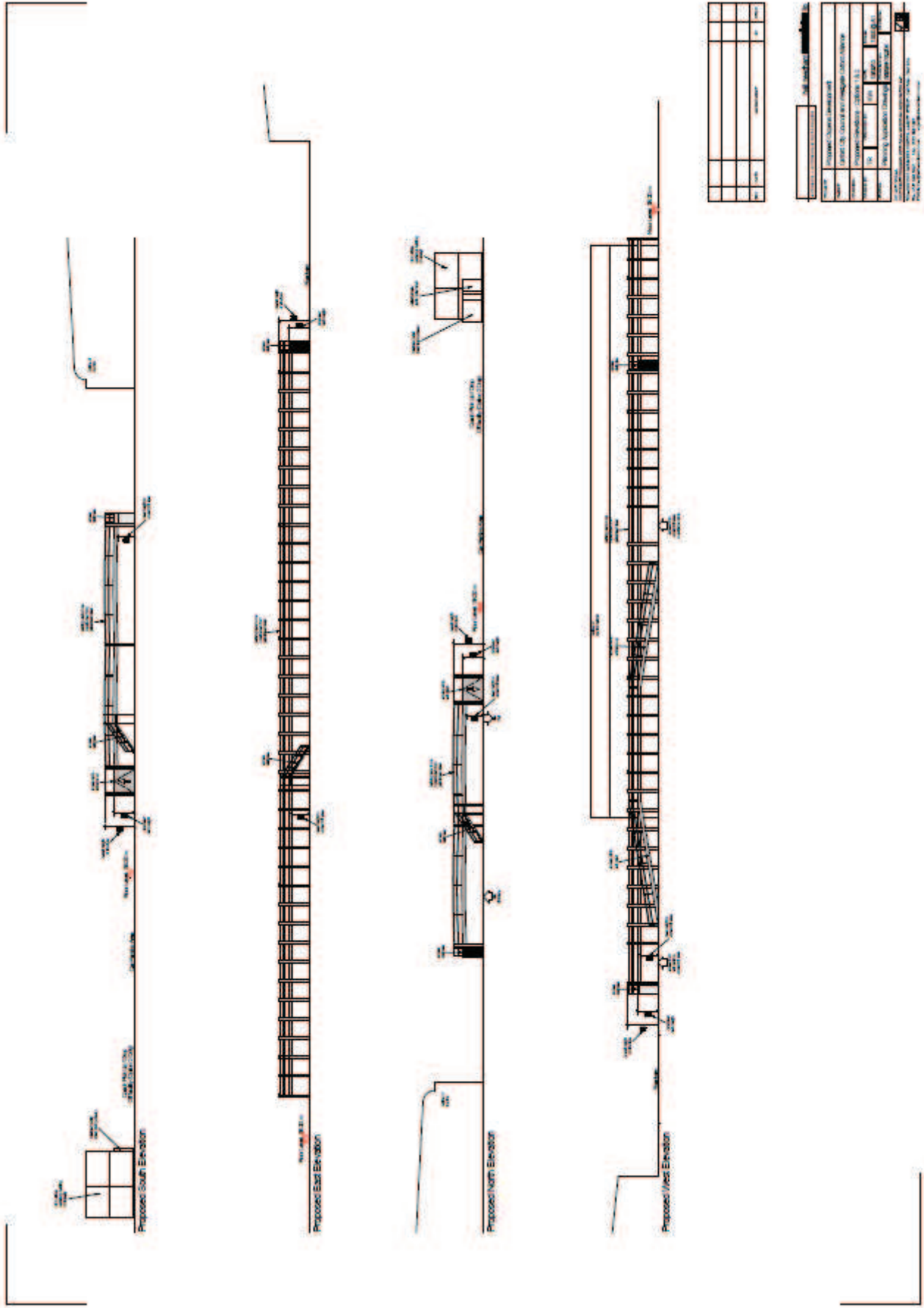


# Site Layout Option 2: First Floor





# Elevations to Decked Car Park




PROJECT INFORMATION	
PROJECT NAME	Decked Car Park
CLIENT	
DESIGNER	
DATE	
SCALE	
PROJECT LOCATION	
PROJECT NUMBER	
PROJECT STATUS	
PROJECT PHASE	
PROJECT BUDGET	
PROJECT RISK	
PROJECT COMPLETION	
PROJECT CONTACT	
PROJECT APPROVAL	
PROJECT REVIEW	
PROJECT SIGNATURE	
PROJECT DATE	



# Male / Female Toilets

## Male/Female toilet unit

**External Doors**

- Steel framed, insulated, outward opening with vertical track, over handle set over chair.
- 950mm x 2040 high (open) door.

**Windows**

- Horizontal sliding, obscure single glazed.
- 750mm x 500 high.
- Window guards 750mm x 500 high.

**Ventilation**

- Standard high level vent.

**Floor**

- Vinyl to knee throughout.

**W.C. Area**

- W.C. white, low flush, white.
- Mirror and basin with coat lap (large).
- 200mm water heaters.
- Urinals (4), two cubicles and two openback.
- Drainage connections through wall.

**Heating, Lighting and Electrical**

- Radiator.
- Electric fan 150mm c/w timer.
- 40W light fixture 2x3.
- Ceiling mounted red switch on way.
- Consumer unit (local zone).
- Fluorescent light (2x Fluorescent).

**Internal unit**

- Stainless partition c/w door.
- Mirrors.
- Cubicle partitioning, long panels, 450mm doors.
- Urinal access, white front, grey pan.
- Mirrored air freshener.
- Soap dispenser.
- Median bar.
- Hand soap dispenser.

**Safety features**

- Fire and door lock.
- 70mm thick cover striking through rail.
- Fire rubric barrier (normal work).
- Beating cover.
- Male program.
- Female program.
- Postion boxes.

**Plumbing connections**

- Water 22mm (factory fitted to 40 PSI)
- Waste 110mm

**Electrical loading**

- Single phase 230V
- 43 amps.

**Dimensions**

- External length - 6000mm
- External width - 3200mm
- Internal length - 5600mm
- Internal width - 2600mm
- Long cubicle length - 1800mm
- Long cubicle width - 3700mm

**Number of seats**

- 2 Nr
- 4 Nr
- 4 Nr
- 2 Nr
- 10 B.Nr
- 4 Nr
- 4 Nr
- 2 Nr
- 4 Nr
- 2 Nr
- 2 Nr
- 2 Nr
- 4 Nr
- 1 set
- 4 set
- 1 set
- 2 Nr
- 2 Nr
- 2 Nr
- 4 Nr
- 1 set
- 4 Nr
- 1 Nr
- 1 set

Not scaled

# Disabled Persons Toilet

## Disabled persons toilet unit

Complete self-contained disabled persons toilet accommodation. Service installation, heating, lighting, ventilation and insulation comply with all necessary regulations and performance criteria.

**Exterior Doors**

- Steel framed, insulated, outward opening with metric lock, lower handle and door closer, 828 width x 2040 high (colour Beil)

### Windows

- Forcible sliding, aluminium glazed
- 700 extra x 500 high
- Window guards 750wide x 620 high

### Ventilation

- Scimitar High level vents

### Floor

- Vinyl to base throughout

### W.C. Area

- Bidible W.C.
- Disabled wash hand basin (female)
- Slow water heater (fully sealed)
- Drainage connection through wall

### Heating, Lighting and Electrical

- Extractor fan, 100mm
- Freeport
- High level heater, 2kw
- Ceiling mounted air switch one way
- Convector (low, single phase)
- Fluorescent light (2x Fluorescent)

### Fixtures and fittings

- Disabled pictogram
- Mirrors
- Disabled grabrails
- Disabled fan heaters
- Recobust air freshener
- My jumbo dispenser
- Soap dispenser
- Mudam bin
- Slung towel dispenser
- Baby nappy changing unit (low backboard)
- Mat and coat hook
- 70mm black plastic skirting throughout
- Portico leads



### Building connections

- Water 15mm (factory fitted to 40 PSI)
- Waste 110mm

### Electrical loading

- Single phase 230v
- 23 amps

### Dimensions

- External length - 3084mm
- External width - 2450mm
- Internal length - 2620mm
- Internal width - 2352mm
- Bag cartons (length) - 2635.6mm
- Bag cartons (width) - 2370.9mm

Not scaled

1 Nr

2 Nr  
2 Nr

2 Nr

8.94m<sup>2</sup>

1 Nr  
1 Nr  
1 Nr

1 Nr  
1 Nr  
1 Nr  
1 Nr  
3 Nr

1 Nr  
2 Nr  
1 set  
1 set  
1 Nr  
1 Nr  
1 Nr  
1 Nr  
1 Nr  
1 Nr  
1 Nr

1 set